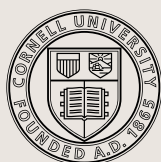


Cornell
Institute for
Healthy Futures



ANNUAL REPORT 2023

INNOVATING ACROSS HEALTH,
HOSPITALITY, AND DESIGN



Cornell University

MEMBER ORGANIZATIONS

FOUNDING MEMBERS



Melissa Cerialle,
P '15, '16, '18,
Emertius Member,
Board of Trustees,
Montefiore Medicine

CORPORATE MEMBERS



THANK YOU TO OUR MEMBERS!

TABLE OF CONTENTS



Message from
the Directors

page 4

Mission

page 5

Leadership

pages 6-7



ENGAGE

Outreach

page 8

INSPIRE

Education

page #

INNOVATE

Research

page #

A MESSAGE FROM THE DIRECTORS



Mardelle Shepley

Executive Director, CIHF

*Professor, Department of Human Centered Design
College of Human Ecology*



Heather Kolakowski

Associate Director, CIHF

*Lecturer, Nolan School of Hotel Administration
SC Johnson College of Business*

We are pleased to present the Cornell Institute for Healthy Futures' seventh annual report.

In one of the most active years since our founding, we pushed our agenda of innovation, engagement and inspiration forward. In May of 2023 we held the first symposium since 2016. Eighty-five members of our community gathered to discuss “Reinventing Health, Hospitality and Design” and participate in a workshop, “Reimagining Assisted Living.” This was the first in-person event for CIHF since spring of 2020 and the enthusiasm for gathering was evident. Apart from participation on the part of industry experts and academics, more than 80 students expressed interest in participating and many new alliances were formed.

Earlier in the academic year, we offered our fifth summer session and third winter session classes on Change-Making: Designing Healthy and Hospitable Environments and this past spring 59 students participated in the Health, Hospitality and Design Industry Seminar, the core course for our minor. Our fall webinar, Affordable Senior Living: Challenges and Opportunities Ahead featuring Mitch Brown, Sevy Petras and Jay Woolford, gathered 566 live attendees.

Mardelle Shepley and Heather Kolakowski continued to serve as directors and were joined by 3 new board members, 4 new industry scholars, and 2 new faculty fellows.

The coming year promises new experiences as our board expands, we are joined by new fellows and scholars and the number of students seeking our minor increases. We are grateful for the contributions of the members of our community.

– Heather and Mardelle

MISSION

ENGAGE - INSPIRE - INNOVATE



The mission of the Cornell Institute for Healthy Futures is to provide a transdisciplinary platform for integrating hospitality, health management/policy, and design to enhance service excellence in healthcare, wellness, senior living, and related industries.

GOVERNING BOARD

The Cornell Institute for Healthy Futures is a cross-campus collaboration between the College of Human Ecology and the Nolan School of Hotel Administration. The Deans of the schools are chairs of the governing board.



Rachel Dunifon

*Rebecca Q. and James C. Morgan Dean
College of Human Ecology*



Andrew Karolyi

*Dean
SC Johnson College of Business*



Kate Walsh

*Dean & E.M. Statler Professor
Nolan School of Hotel Administration*



College of Human Ecology

Nolan
Cornell
SC Johnson College of Business

CIHF STAFF



Christine Tanner

Program Manager



Allison DeDominick

Program Assistant



Khizar Jaffry

Student Assistant

ADVISORY BOARD



David Banta

*Partner
BKV Group*



Ruth Browne

*President & CEO
Ronald McDonald House NY*



Melissa Ceriale

*Emertius
Board of Trustees
Montefiore Medicine*



Andrew Chen

*President
Tyson BioResearch, Inc.*



Robert Corona

*CEO
Upstate Medical University*



Gérard van Grinsven

*COO & Partner
Waterstone Properties*



Joe Jedlowski

*President
Distinctive Living*



Mary Leary

*CEO & President
Mather*



Tim McCarthy

*Partner & Managing Principal
Hart Howerton*



Bradford Perkins

*Chairman & CEO
Perkins Eastman Architects*



Severine Petras

*CEO & Co-Founder
Priority Life Care*



Robert Ritz

*CEO
MercyOne*



Lynne Rizk

*Principal Director of Health NY
HKS, Inc.*



David S. Schless

*President & CEO
American Seniors Housing Association*



Kenneth Segarnick

*Chief Corporate Officer
Brandywine Living*



Martin Stallone

*Chief Executive Officer
Cayuga Medical*



Peter Yesawich

*Chief Brand Officer
Yesawich Holding, LLC*

ENGAGE



A core mission of the Institute is to provide opportunities for active engagement between industry, faculty, and students. During the 2022-23 academic year CIHF undertook several initiatives to achieve these goals including the following symposia, roundtables, panels, seminars, and social events.



REINVENTING HEALTH, HOSPITALITY & DESIGN SPRING SYMPOSIUM



Held on the idyllic Cornell campus in Ithaca, NY from May 11-13, the Reinventing Health, Hospitality, and Design Symposium included lectures and panels led by economists, senior living and hospitality entrepreneurs, and healthcare practitioners and designers. Beth Mace, chief economist at the National Investment Center for Seniors Housing and Care (NIC), and Rohit Verma, Founding Provost of VinUniversity and Professor in the Cornell University Nolan School of Hotel Administration, gave keynote addresses. Special events included a reception and the opportunity to participate in a botanical walk, engage in art therapy, or immerse in a virtual, stress-reducing water environment.



REIMAGINING ASSISTED LIVING WORKSHOP

The Reimagining Assisted Living workshop was an intimate hands-on thought design workshop led by Troy Savage of Mazzetti. Designers joined healthcare and senior living leaders, workers, residents, and Cornell students to collaborate in an evening and interactive day of re-imagining the design of assisted living in response to changing needs.

The event was unique for its integrated empathy training meant to sensitize participants to the varying needs of all stakeholders. The assignment was broad, and participants were encouraged to think radically and abandon traditional healthcare delivery. There were no constraints placed on the thought experiment. Rather than focusing on the design of a single facility, various stakeholders were encouraged to work together to contemplate blue-sky thinking for the design of varied assisted living communities.

We provided 8 hours of AIA HSW CEU approved course content for the Reimagining Assisted Living Workshop.



SYMPOSIUM



WORKSHOP



SYMPOSIUM & WORKSHOP SPONSORS



HART HOWERTON
NEW YORK • SAN FRANCISCO

MAZZETTI

M+ MERCYONESM



College of Human Ecology

Nolan
Cornell
SC Johnson College of Business

FACILITATING STUDENT ENGAGEMENT

Cornell University's Nolan School of Hotel Administration made a generous contribution to the Cornell Institute for Healthy Futures to support student initiatives and to foster innovation. One of the notable initiatives that benefited from this funding was the establishment of a project between the Waterstone Properties and the Healthy Futures Student Chapter (CUHF, pictured below). This student-led organization focuses on promoting holistic well-being and healthy lifestyle choices.

Additionally, the contribution has facilitated mini-grants for student research or conference attendance, including the CIHF Reinventing Health, Hospitality and Design Symposium.

Funding to support students at the conference was also provided by Cornell's College of Human Ecology and Ruth Browne, President and CEO at the NYC Ronald McDonald House.



FALL WEBINAR: AFFORDABLE SENIOR LIVING



Heather Kolakowski
Associate Director, CIHF



Severine Petras
CEO & Co-Founder, Priority Life Care



Jay Woolford
SVP Development, CIRC



Mitch Brown
Principle Consultant, Senior Housing Consulting

The CIHF Fall Webinar, Affordable Senior Living, took place on Friday, October 14th through eCornell. Over 550 people attended the webinar live. The session was moderated by CIHF's Associate Director, Heather Kolakowski and featured Severine Petras, CEO and Co-Founder of Priority Life Care, Jay Woolford, SVP-Development at CIRC, and Mitch Brown, Principal Consultant for Senior Housing Consulting. During the session, senior housing experts provided insight into the challenges and opportunities within the affordable senior living industry. They identified labor shortages as a continuing pressing issue and highlighted the rising costs for goods and services as inflation surged, which posed challenges for senior housing communities looking to expand and accommodate the growing population need.

BROWN BAG RESEARCH LUNCHES

To help further research connections and innovative thinking about healthy futures, students, faculty, and staff joined us for quick lunch discussions about the recent publications of CIHF faculty fellows.

Speakers and Topics:

Don Rakow

How Nature Benefits Us in Each Age Class

Rana Zadeh, Alicia Valencia, and Anne Cramer
*Transforming Home Medicine Management for Older Adults:
Students, Faculty, and Community Join Forces*

¹Nagesh Gavirneni, Sudan Kulturel-Konak, and Abdullah Konak
*Food for Thought: Designing Nutritious, Enjoyable, Economical and Efficient
Dining Services at Continuing Care Facilities*





HEALTHY FUTURES MINOR

Our goal is to ignite students' and community members' passion for health, hospitality, and design to share knowledge and find solutions within the three fields. CIHF helps develop transdisciplinary educational programs, like our Healthy Futures minor, and provides support to instructors teaching courses offered by Cornell University related to the institute's mission.

The Cornell Institute for Healthy Futures and the Department of Human Centered Design (formerly the Department of Design + Environmental Analysis) offers a minor in Healthy Futures open to all undergraduate students. This innovative transdisciplinary focus — the first of its kind — has the potential to change industry practices and professional attitudes by breaking down the silos that often undermine creative solutions. This minor is of interest to students enrolled in health, wellness, policy, and hospitality related majors, or students interested in applying their education to problem-solving in population health and wellness.



Elizabeth Madamidola
College of Human Ecology
2023



Madeline Lei
College of Human Ecology
2023

IN-PROCESS HF MINORS

Mielle Emouna
Nolan School of Hotel Administration
2024

Jiayi Guo
College of Human Ecology
2024

Isabella Suffredini
Nolan School of Hotel Administration
2025

CORNELL UNIVERSITY HEALTHY FUTURES (CUHF)

Cornell University Healthy Futures: Undergraduate Chapter (CUHF) is the undergraduate student division of the Cornell Institute for Healthy Futures, the first academic institute in the country to combine hospitality, environmental design, and health policy & management to improve patient and customer experience. CUHF promotes careers, research, and extracurricular activities at the intersection of hospitality, health, and design.

The purpose of this club is to engage students throughout multiple colleges, including the School of Hotel Administration and the College of Human Ecology, in conversation and professional development. We strive to create a collaborative environment and community for students interested in this intersectional field, and look forward to weekly discussions, networking with leaders in the industry, seminars & guest speakers, graduate panels, professional development, and industry education this semester.



WATERSTONE PROPERTIES CUHF PROJECT

Several teams of students from CUHF worked across three projects this past year spanning centralized sterilization, 'blue ocean' healthcare experience planning, and innovation in orthopedic care models. The teams conducted a mid-semester review with Waterstone leaders Gérard van Grinsven and Oliver Olsson during their visit in late March 2023, and received additional mentorship as they worked towards final presentations at the CIHF Symposium, Reinventing Health, Hospitality and Design in May! The club also planned a field trip to Kendyl at Ithaca and participated in a speaker event with Alejandra Vincettin: a pioneer of wellbeing at the intersection of Healthcare, Hospitality, Senior Living, and Design.



STUDENT PHOTOGRAPHY CONTEST

The 2022 Student Photography Contest: Reinventing Health, Hospitality, and Design, was open to all Cornell students this fall. The winners were chosen during our Advisory Board meeting on Friday, October 28.



Left: 1st place, \$300 award, *Untitled 1* by Damun Jawanrudi, MArch '22



Top right: 2nd place, \$200 award, *Waiting in the Window* by Nicole Collins, CALS, BS '25



Bottom right: 3rd place, \$100 award, *Serenity in the Modern World* by Yuhjin Chung, College of Engineering, BS '25

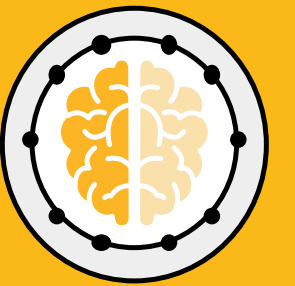
MARDELLE SHEPLEY AWARDED THE 2022 AMERICAN COLLEGE OF HEALTHCARE ARCHITECTS LIFETIME ACHIEVEMENT AWARD!

Mardelle Shepley is Awarded the 2022 American College of Healthcare Architects Lifetime Achievement Award! The ACHA Lifetime Achievement Award is the highest honor that the College can bestow on an architect and recognizes their significant body of work and distinguished contributions to the healthcare architectural community.



HERSTORIES PODCAST FEATURED CIHF DIRECTORS

INNOVATE



Her Stories, a podcast dedicated to telling the origin stories of women who have built careers in senior housing and hosted by CIHF Advisory Board member Severine Petras, had the immense pleasure of featuring CIHF Executive Director Mardelle Shepley (episode 13) and Associate Director Heather Kolakowski (episode 32). Mardelle shared her invaluable insights into the realm of design and senior housing, while Heather discussed her journey of mentoring students and incorporating hospitality and design into the world of senior housing. Together, their stories paint a vivid picture of innovation and possibility for healthy futures.

This year, CIHF has driven innovation in health, hospitality, and design offering funding for mini research grants and conference participation. CIHF directors and fellows published influential works, expanding knowledge in their fields. CIHF remains committed to fostering an environment that supports research, collaboration, and forward-thinking, as it continues to push the boundaries of innovation and shape a healthy future.



BLUE SPACE INSTALLATION BY CONNIE LIN, MA '23



In collaboration with CIHF, the Blue Space gallery exhibit by Connie Lin '23 was open from April 12 - May 12, 2023 in MVR Gallery 1250. This gallery featured an immersive sensory waterscape that was designed to help visitors reduce stress and find a sense of calm amidst the end-of-semester hustle and bustle of academic life. In addition, findings and design recommendations from the “Bluescapes” study conducted earlier this year by Connie was on display. During the Reinventing Symposium attendees were escorted by Connie to experience the installation.

ON THE DYNAMICS OF KITCHEN UTENSILS BY MADELINE LEI '23



How can patients be better connected with resources? Healthy Futures Minor Madeline Lei '23 explored this question in *On the Dynamics of Kitchen Utensils* published by The Ripple Effect. To research this question, Madeline worked on a pilot for a public health program connecting Tompkins County providers with student resource navigators from Cornell University. The navigators were responsible for referring patients to resources and following-up with them to gain a better understanding of the Ithaca community and the health disparities one may face.

STUDENT CONFERENCE AND MINI-RESEARCH GRANTS



During the 2022-2023 academic year, CIHF provided valuable funding to support students and innovative research endeavors. One recipient of CIHF funding was Yuexing Hao, a Ph.D. research fellow in Human Centered Design at Cornell University. With a research focus on Human-Computer Interaction, Health Intelligence (Clinical Decision Science), and AIoT/VR, Hao's work aims to leverage these domains to drive advancements in healthcare. Additionally, Hao serves as the President of the Graduate Student Association (HCD) 23' at Cornell University. As a testament to her academic pursuits, Hao will be attending the esteemed Environmental Design Research Association (EDRA) 2023 conference in Mexico City, thanks to the \$500 conference funding provided by CIHF.

HEALTH DESIGN INNOVATIONS LAB (HDIL)

The Health Design Innovations Lab (HDIL), a collaborative initiative co-run by CIHF Faculty Fellow Dr. Rana Zadeh, was allocated \$2500 from CIHF. HDIL is situated within the Design and Environmental Analysis Department of the College of Human Ecology and is dedicated to cutting-edge research that focuses on enhancing healthcare environments.

Its members engage in applied research projects on both national and international levels, collaborating with industry and community partners.

Rana's expertise lies in evidence-based and human-centered healthcare design. Her work aims to improve the quality of life and symptom management for individuals facing chronic, advanced, or life-limiting illnesses. Publications from Rana this year include *Lean Design of the Pediatric Intensive Care Unit Patient Room for Efficient and Safe Care Delivery* and *Development and Palliative Care Staff Reactions to a Sleep Regulation Educational Intervention*. These publications reflect her commitment to advancing healthcare through research and innovation.



2022-23 DIRECTOR AND FACULTY FELLOW SELECTED PUBLICATIONS

Bjelland, M., & **Bruyère, S.** (2022). Data for evaluating post-secondary schooling and career outcomes of Generation A. *Research on Autism in the Workplace and Generation A* (pp. 111-135). Bingley, UK: Emerald Publishing. <https://doi.org/10.1108/978-1-80071-256-020211007>

Bruyere, S., Chang, H-Y., Saleh, M., & Vogus, T. (2022). Neurodiverse applicant screening, interviewing and selection. *Neurodiversity in the Workplace, Society for Industrial Organizational Psychology Frontiers of Research Series* (pp. 98-123). Oxfordshire, UK: Francis Group Publishers.

Capezuti, E., **Zadeh, R. S.**, Brigham, M. A., Dias, B. A., Kim, B. C., Lengetti, E., Erikson, B., Swezey, N., & Krieger, A. C. (2022). Development and palliative care staff reactions to a sleep regulation educational intervention. *BMC Palliative Care*, 12, 21. <https://doi.org/10.1186/s12904-022-00971-5>

Chang, H-Y., Saleh, M., **Bruyère, S.**, & Vogus, T. (in process). Making the employment interview work for a neurodiverse workforce: Perspectives of individuals on the Autism Spectrum, employers, and service providers. *Journal of Vocational Rehabilitation*.

Colella, A., & **Bruyère, S.** (2022). Implications and needed next steps. *Neurodiversity in the Workplace, Society for Industrial Organizational Psychology Frontiers of Research Series* (pp. 316-326). Oxfordshire, UK: Francis Group Publishers.

DeMicco, F. J., Tschirky, P. P., Jeffrey, M., Li, M., & **Shepley, M. M.** (2022). Strategic Medical Tourism Design: A Case of Switzerland, Hospitality Bridging Healthcare (H2H©). In *Medical Travel Brand Management* (1st ed., pp. 14). Apple Academic Press. <https://doi.org/10.9781003277392>

Falkowski, T. B., Jorgensen, B., **Rakow, D. A.**, Das, A., Diemont, S. A. W., Selfa, T., & Arrington, A. B. (2022). “Connecting With Good People and Good Plants”: Community Gardener Experiences in New York State During the COVID-19 Pandemic. *Frontiers in Sustainable Food Systems*. <https://doi.org/10.3389/fsufs.2022.854374>

Kong, L., Sadatsafavi, H., & **Verma, R.** (2022). Effective Service Operations Management: Aligning Priorities in Healthcare Operations with Customer Preferences. *The Palgrave Handbook of Service Management* (pp. 1-14). Palgrave Macmillan. https://doi.org/10.1007/978-3-030-91828-6_38

Lavetti, K., DeLeire, T., & **Ziebarth, N. R.** (2023). How do low-income enrollees in the Affordable Care Act exchanges respond to cost-sharing? *Journal of Risk and Insurance*, 90(1), 155-183.

Loebach, J., Rakow, D. A., Meredith, G., & **Shepley, M.** (2022). Time Outdoors in Nature to Improve Staff Well-Being: Examining Changes in Behaviors and Motivations among University Staff in the Use of Natural Outdoor Environments since the Emergence of the COVID-19 Pandemic. *Frontiers in Psychology*, 13, 869122. <https://doi.org/10.3389/fpsyg.2022.869122>

Lu, Y., Bishop, N. B., & **Zadeh, R.** (2022). Lean Design of the Pediatric Intensive Care Unit Patient Room for Efficient and Safe Care Delivery. *Health Environments Research & Design Journal*, 15(4), 369-390. <https://doi.org/10.1177/19375867221113066>

Marcus, J., Siedler, T., & **Ziebarth, N. R.** (2022). The Long-Run Effects of Subsidized Sports Club Memberships for Children on Take-Up and Physical Activity. *American Economic Journal: Economic Policy*, 14(3), 128-165.

McVicar, D., Wilkins, R., & **Ziebarth, N. R.** (2022). Four Decades of Disability Benefit Policies and the Rise and Fall of Disability Reciprocity Rates in Five OECD Countries. In D. Besharov & D. Call (Eds.), *Labor Activation in a Time of High Unemployment: Encouraging Work while Preserving the Social Safety Net* (1st ed., Chapter 7). Oxford University Press.

Ong, A. D., Cerrada, C. J., Ja, N. M., Lee, R. A., & Tan, A. (2022). Racial uplifts and the Asian American experience. *American Psychologist*. Advance online publication. <https://doi.org/10.1037/amp0001115>

Oppenheim, M. (2022, October 19). Why This Entrepreneur Dedicated Her Life’s Work to Helping Older People Enjoy Fulfilling Lives. *Entrepreneur*. https://www.entrepreneur.com/starting-a-business/why-this-entrepreneur-dedicated-her-lifes-work-to-helping/437452?fbclid=IwARiZcLWywjJTa5u_ylCqbvjZFDxCgOy_vv3J6m_R3EDkbZSNftllkEVyBvE

Patchen, A. K., **Rakow, D. A.**, Wells, N. M., Hillson, S., & Meredith, G. R. (2022). Barriers to children’s outdoor time: teachers’ and principals’ experiences in elementary schools. *Environmental Education Research*, 28(4), 433-448.

Rakow, D. A., & Ibes, D. C. (2022). Campus Nature Rx: How investing in nature interventions benefits college students. *Frontiers in Psychology*, 13, 960370. <https://doi.org/10.3389/fpsyg.2022.960370>

Raman, S., Kriner, D., **Ziebarth, N. R.**, Simon, K., & Kreps, S. (2022). COVID-19 Booster Uptake among US Adults: Assessing the Impact of Vaccine Attributes, Incentives, and Context in a Choice-Based Experiment. *Social Science & Medicine*, 310, 115277.

Saleh, M., **Bruyère, S.**, Erickson, W., von Schrader, S., & Malzer, V. (2023). Disability-inclusive online outreach and recruitment for employers. *DeGruyter Handbook of Disability Management* (pp. 335-354). DeGruyter GmbH.

Sachs, N. A. (2022). E.O. Wilson: A Legacy of “Biophilia.” *Health Environments Research & Design Journal*, 15(4), 283-286.

Shepley, M. M., Ames, R. L., Leitao, R. M., & Coleman, G. (2022). Community-based participatory research on the impact of greenspace on violent crime. *Environmental Research Health*, 1(2), 022001.

Shepley, M. M., Savage, T., & Smith, J. (2022). Reimagining Workshops. *HERD: Health Environments Research & Design Journal*, 15(4), 16-24.

Wang, Z., & **Shepley, M. M.** (2022). The Relationship of Neighborhood Walking Behavior to Duration of Aging in Place—A Retrospective Cohort Study. *International Journal of Environmental Research and Public Health*, 19(24), 16428.

Yoon, J., & Kim, C. (2022). Positive Emodiversity Is Related to Mental Health: A Diary Study. *Frontiers in Psychology*, 13, 961879. <https://doi.org/10.3389/fpsyg.2022.961879>

FACULTY FELLOWS

The CIHF Faculty Fellows Program provides collaboration opportunities and support for invited Cornell University faculty for developing or enhancing research, curriculum, and industry-related activities that link hospitality, health, and design. CIHF Fellows form a diverse, yet cohesive, learning community and collectively create a strong multidisciplinary knowledge base.

COLLEGE OF HUMAN ECOLOGY



Laura Barre
Assistant Professor
Nutritional Sciences



Frank Becker
Professor
Human Centered Design



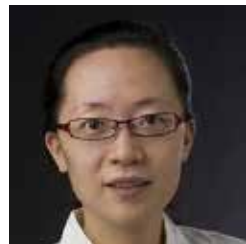
John Cawley
Professor
Policy Analysis & Management



Alan Hedge
Professor Emeritus
Human Centered Design



Brooke Hollis
Associate Director Emeritus
Sloan Program in Health
Administration



Ying Hua
Associate Professor &
Director of Undergraduate
Studies



Saleh Kalantari
Assistant Professor
Human Centered Design



Joseph Laquatra
Professor
Human Centered Design



Janet Loebach
Assistant Professor
Human Centered Design



Beth McKinney
Lecturer
Division of Nutritional
Sciences



Sean Nicholson
Professor
Policy Analysis and
Management



Anthony Ong
Professor
Human Development



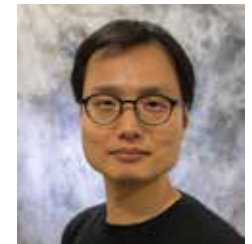
Karl Pillemer
Hazel E. Reed Professor
Human Development



Mardelle Shepley
Professor
Human Centered Design



So-Yeon Yoon
Associate Professor
Human Centered Design



Jay Yoon
Assistant Professor
Human Centered Design



Rana Sagha Zadeh
Assistant Professor
Human Centered Design



NOLAN SCHOOL OF HOTEL ADMINISTRATION

JOHNSON GRADUATE SCHOOL OF MANAGEMENT



Judi Brownell
Professor
Management & Organizational
Behavior



HaeEun Helen Chun
Assistant Professor
Services Marketing



Lisa Chervinsky
Lecturer
Property Development &
Management



Ravinder Kingra
Lecturer, Food & Beverage
Management



Li Chen
Associate Professor,
Operations, Technology &
Information Management



Nagesh Gavirneni
Associate Professor,
Operations, Technology & Info
Management



Shawn Mankad
Assistant Professor,
Operations, Technology and
Information Management



Elizabeth Mannix
Associate Dean for Executive
MBA



Heather Kolakowski
Lecturer, Food & Beverage
Management



Robert Kwortnik
Associate Professor
Service Marketing



Peng Liu
Distinguished Professor in
Asian Hospitality Management



Peggy Odom-Reed
Associate Professor
Service Marketing



Larry Robinson
Professor, Operations,
Technology, &
Information Management



Sunita Sah
Assistant Professor
Management & Organization



Jamie Perry
Assistant Professor,
Employment Relations &
Human Resources & Law



Tony Simons
Associate Professor,
Management &
Organizational Behavior



Vince Slaugh
Assistant Professor
Operations Management &
Information Systems



Alex Susskind
Associate Professor,
Food & Beverage Management



Anke Wassel
Lecturer
Executive Director of the
Center for Transformative Action



Gary Thompson
Professor
Services Operations
Management



Kate Walsh
Dean &
E.M. Statler Professor



Brad Wellstead
Lecturer
Property Development &
Management



Kristina Workman
Assistant Professor
Management & Organizational
Behavior

THE DYSON SCHOOL OF APPLIED ECONOMICS & MANAGEMENT

COLLEGE OF AGRICULTURE & LIFE SCIENCES



Donald A. Rakow
Associate Professor
Section of Horticulture
School of Integrative Plant Science



Malte Ziewitz
Assistant Professor
Science & Technology Studies

SCHOOL OF INDUSTRIAL & LABOR RELATIONS



Susanne M. Bruyère
Professor, Disability Studies



Diane Burton
Professor & Department Chair
Human Resource Studies



LaWanda Cook
Extension Associate
Yang-Tan Institute SUBD



ACADEMIC SCHOLARS

The CIHF Academic Scholars are faculty members at universities other than Cornell University who collaborate in research projects, educational activities or industry events that link hospitality, health, and design.



Tor Wallin Andreassen
Professor of Marketing
NHH Norwegian School of Economics



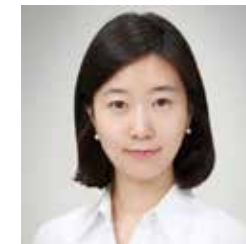
Sue Baker
Professor Emeritus
Johns Hopkins Bloomberg
School of Public Health



Aravind Chandrasekaran
Associate Professor
Management Sciences
The Ohio State University



Sunmee Choi
Professor
School of Business
Yonsei University



Kyunghwa Chung
Lecturer, Department of
Fashion Design
Chung-Ang University



Stephanie J. Creary
Assistant Professor of
Management
Wharton School of the
University of Pennsylvania



Xin (David) Ding
Associate Professor of Project
and Supply Chain Management
Black School of Business, Penn
State Behrend



David Dobrzykowski
Associate Professor, Department of
Supply Chain Management
University of Arkansas



Marian Gryzlo
Director of Corporate &
Strategic Partnerships
Ronald McDonald House NY



Bo Edvardsson
Professor and Vice Rector
Karlstad University



Marie Elf
Associate Professor, Nursing
& Architecture
Dalarna University &
Chalmers University of
Technology



Mariana G. Figueiro
Professor
Rensselaer Polytechnic
Institute

ACADEMIC SCHOLARS



Craig Froehle

Professor, Business Analytics & Information Systems
Carl H. Lindner College of Business, University of Cincinnati



Andrew S. Gallan

Associate Professor, Marketing
Kellstadt Graduate College of Business at DePaul University



Brian J. Galli

Assistant Professor, Project Management and Management Engineering
Long Island University



Susan Goldstein

Associate Professor, Supply Chain & Operations
Carlson School of Management, University of Minnesota



Huiwen Xu

Assistant Professor
School of Public and Population Health, and Sealy Center on Aging



Douglas Morrice

Professorship in Business
McCombs School of Business
The University of Texas at Austin



Pedro Oliveira

Associate Professor of Operations, Technology and Innovation Management
Copenhagen Business School



Lia Patrício

Assistant Professor of Operations Management
School of Engineering of the University of Porto



Anders Gustafsson

Professor, Business Administration
Service Research Center, Karlstad University



Wafa Hammedi

Associate Professor, Service Innovation & Marketing
Service Research Center, University of Namur



HyunJeong "Spring" Han

Assistant Professor, Project Management and Management Engineering
Emlyon Business School



Janelle Heineke

Professor & Chair of Operations and Technology Management
Questrom School of Business, Boston University



Aleda Roth

Distinguished Professor, Supply Chain Management
Clemson University, College of Business and Behavioral Science



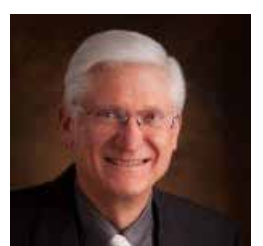
Naomi Sachs

Assistant Professor
Plant Science and Landscape Architecture, University of Maryland



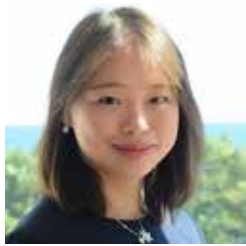
Warren S. Sandberg

Professor of Anesthesiology, Surgery, and Biomedical Informatics
Vanderbilt University



Glen Schmidt

David Eccles Professor of Business/Professor, OIS
University of Utah



Kejia Hu

Assistant Professor of Operations Management
Service Research Center, Vanderbilt University



Philippa Hunter-Jones

Professor of Marketing
University of Liverpool Management School



Jay Kandampully

Professor of Service Management, Department of Human Sciences
Ohio State University



Byron Keating

Professor of Management,
Australian National University



Rachna Shah

Associate Professor, Supply Chain and Operations
Carlson School of Management, University of Minnesota



Lina Song

Assistant Professor of Operations and Technology
University College London School of Management



Courtney Suess-Raeisinafchi

Assistant Professor
Texas A & M University



Subhashree (Sue) Sundar

Associate Professor Director Operations & Supply Chain Program
University of Utah



Catharina von Kosskull

Associate Professor,
Department of Marketing
University of Vaasa



Michael A Lewis

Professor, Operations & Supply Management
University of Bath School of Management



Susan F. Lu

Associate Professor of Management
Krannert School of Management, Purdue University



Janet R. McColl-Kennedy

Professor, Marketing
UQ Business School, University of Queensland



Vikram Tiwari

Associate Professor, Anesthesiology & Biomedical Informatics and Director, Surgical Analytics
Vanderbilt University Medical Center



Anita Tucker

Professor, Operations and Technology Management
Questrom School of Business
Boston University



Liana Victorino

Associate Professor
Peter B. Gustavson School of Business, University of Victoria



Matthew Walsman

Assistant Professor, Department of Supply Chain Management
Rutgers Business School





Michele Williams
Assistant Professor
of Management and
Entrepreneurship
University of Iowa



Jochen Wirtz
Professor Department of
Marketing
NUS Business School,
National University of
Singapore



Xiande Zhao
Professor of Operations and
Supply Chain Management
China-Europe International
Business School



Nicolas Ziebarth
Associate Professor
Sloan, Policy Analysis &
Management



Jessica Rose Cooper
Chief Commercial Officer
International WELL Building
Institute



John DeHart
Co-Founder
Nurse Next Door



David Deininger
Architect and Healthcare Facility
Master Planning Consultant
2dplanning



Srisatish Devapatla
Department of Pediatrics, Neonatal-
Perinatal Medicine
Cayuga Medical Center

INDUSTRY SCHOLARS

The CIHF Industry Scholars are colleagues from non-educational organizations who collaborate in research projects, educational activities or industry events that link hospitality, health, and design.



Christine Foster
Owner & Operator
eight two three Interior
Planning



Vaibhav Garg
Director of Talent & Culture
Accor



Esther Greenhouse
Environmental Gerontologist
Silver to Gold Strategic
Consulting



Nancy Griffin
Founder
Senior Trade Media



Jill Guindon-Nasir
Senior Director, Global Learning
Solutions & Organizational Development
Ritz-Carlton Leadership Center



Asheesh Gupta
Co-Founder
Samarth Community



Zach Hollander
Co-Founder & Co-CEO
Kindred Uncommon



Maggie Hsu
Business Development
AirSwap



Zain Ismail
Principal Transformation
Consultant
Henry Ford Health System



Andrew Jenis
Vice President
US Acute Care Solutions



Judy Kaufman
Director of Patient Relationship
Management
Stanford University's Office of Medical
Center Development



Robert G. Kramer
Founder and Strategic Advisor
National Investment Center for
Seniors Housing & Care



Kelly Abramson
Executive, International
Business Development
Penn Medicine



Anna Bjurstam
Vice President
Six Senses Spas



Denise Boudreau-Scott
Presidentt
Drive



Ruth Browne
President & CEO
Ronald-McDonald House NY





Garima Goel Lal
Founder
 Traffic Light Cook



Barbara Lang
Founder
 B. Lang Consulting



Isaac Losh
Founder & Managing Director
 LE, LLC



Elizabeth Martyn
Principal
 Sophos Hospitality Consulting



Sara Terry
*Senior Vice President,
 Resident and Family Engagement*
 Brookdale Senior Living Inc.



Pelin Thorogood
President & Co-Founder
 Wholistic Research and Education Foundation



Gérard van Grinsven
Founder, President & CEO
 The Van Grinsven Hospitality Group



Elizabeth Weiner
Founder
 Elizabeth Weiner Gallery Inc.



Sabah Mohammed
Associate AIA LEED Green Associate, EDAC, WELL AP
 Perkins&Will



Catalina Hoffman Munoz-Seca
Founder and Chairman
 Hoffman Group



Meredith Oppenheim
Founder
 Vitality Society



Erin Peavey
Architect & Design Researcher, Vice President
 HKS, Inc.



Mitchell Weisberg
Managing Director
 Lumen Solutions, Inc.



B.J. Wiley Williams
CEO & Founder
 SoHookd



Jay Woolford
*SVP-Development, CIRC Development,
 a Transforming Age Affiliate*
 Sustainable Housing for Ageless Generations



Kati Peditto
*Co-Director,
 Human Experience Lab*
 Perkins&Will



John P. Rijos
Co-Founder & Operating Partner
 Chicago Pacific Founders



Troy Savage
Associate, Project Manager
 Mazzetti



Nancy M. Schlichting
Retired Chief Executive Officer
 Henry Ford Health System



James F. Sherman
Senior Vice President
 Dougherty Mortgage LLC



Suzanne Simonetta
*Director of Policy,
 Legislation, and Regulations*
 U.S. Department of Labor



Quint Studer
Founder Studer Community Institute
 Studer Community Institute



Joseph M. Tasse
Vice President
 Custom Learning Systems

THANK YOU TO ALL CIHF
 FELLOWS & SCHOLARS!

Email healthy-futures@cornell.edu for more
 information on becoming a fellow or scholar.



NAMING & ENGAGEMENT OPPORTUNITIES

FOUNDING MEMBERSHIP

Benefits include:

All benefits associated with the Corporate Membership Recognition as founding member above regular members.

Priority consideration for speaking opportunities.

Exclusive sponsorship of one of the following each year as a founding member:

CIHF Roundtable or CIHF conference (Platinum sponsorship)

FOUNDING MEMBER

\$100,0000

ADVISORY BOARD MEMBERSHIP

The board, composed of senior-level leaders in the industry, meets twice annually.

Recognition as a partner of CIHF on our website, including your corporate logo, a link to your company's website, & the advisory board member's personal bio & photo.

The commitment is an individual gift of \$10,000 per year for 3 years.

ADVISORY BOARD MEMBER

\$30,0000

VOLUNTEERS AND INTERNSHIP HOSTS

Volunteer as a guest lecturer in classes or as a panelist at CIHF events and the Hospitality, Health, & Design Industry Seminar:

DEA/HADM 3055 &

DEA/HADM 6055

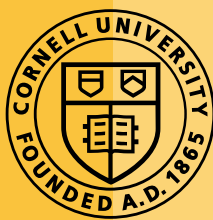
Connect with highly-motivated students for employment & internship opportunities. All CIHF minors participate in a 100 hour internship during the course of their studies at Cornell.

STAY IN TOUCH

Join our email list to be notified of CIHF announcements and opportunities to participate in webinars and industry events.

Sign up to receive the newsletter online
ihf.cornell.edu or by emailing CIHF@cornell.edu.





Cornell Institute for Healthy Futures

Cornell University - 3250 Martha Van Rensselaer Hall - Ithaca, NY 14853
ihf.cornell.edu

Phone: 607.255.2428
CIHF@cornell.edu